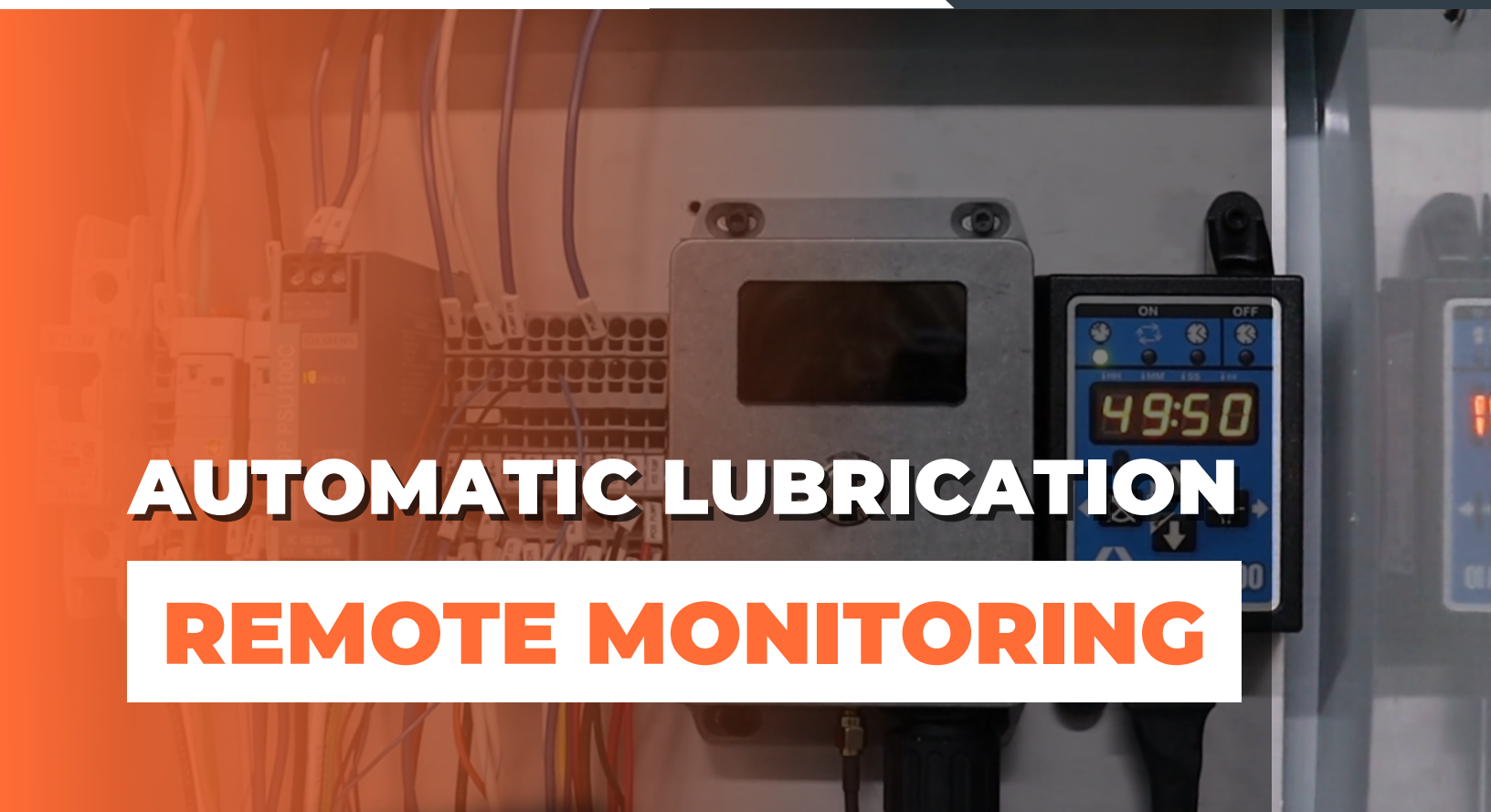
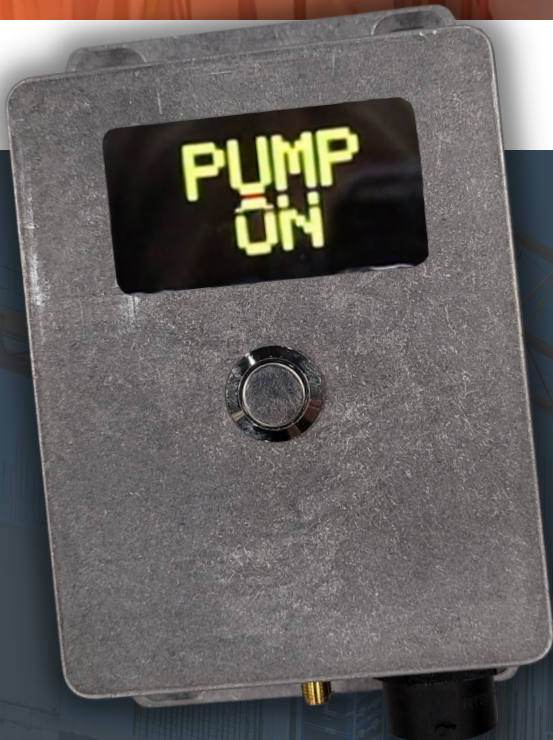


GREASEALERT




AUTOMATIC LUBRICATION **REMOTE MONITORING**




Instant Feedback
on System Issues

GREASEPOINT

 800-455-6023

 hello@greasepoint.com

 GreasePoint.com

WHAT IS IT?

GreaseAlert is an exclusive Industrial Internet of Things (IIoT) remote lubrication monitoring system. It proactively communicates with equipment managers alerting them to potential problems and avoiding catastrophic failures.

COMPATIBLE WITH MANY SYSTEMS

With a very flexible communication platform, GreaseAlert communicates with any brand of pump or controller with data output capabilities.

It can be used on single line, dual line, and progressive systems. Don't let the name fool you, it can be used on systems that deliver grease, fluid grease, or oil.



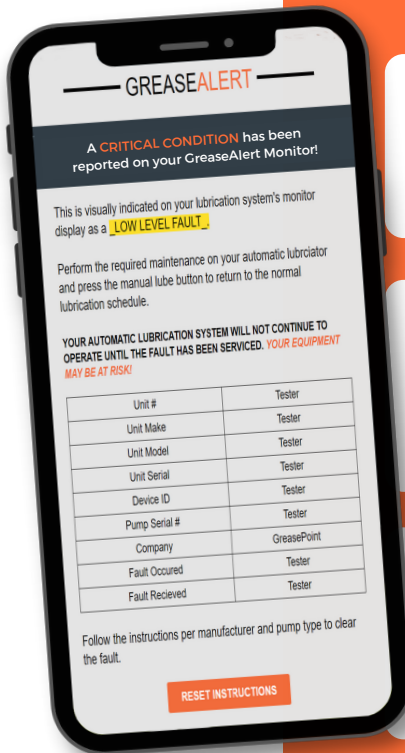
SUITABLE FOR ANY APPLICATION

With an IP65K rating, the monitor is suitable for On-Road Equipment, Off-Road Equipment, and Industrial applications. An IP65K rating provides protection against ingress of dust, and low-pressure water from any angle – making GreaseAlert ideal for tough applications.

COMMUNICATES WITH YOU

GreaseAlert communicates to mobile devices or computers, warning of low lubrication levels or system faults. No special software is required, as system information can be accessed using a mobile device or computer.

3 EASY STEPS TO RESET



1.

VIEW ALERT EMAIL

The issue your system(s) are experiencing will be highlighted in yellow. Click 'Reset Instructions'

2.

GREASEALERT.COM

Visit GreaseAlert.com and select reset instructions for your pump.

3.

SELECT THE PROBLEM

Click on which issue your experiencing to be taken to the easy to follow reset and troubleshooting instructions

TECH SPECS

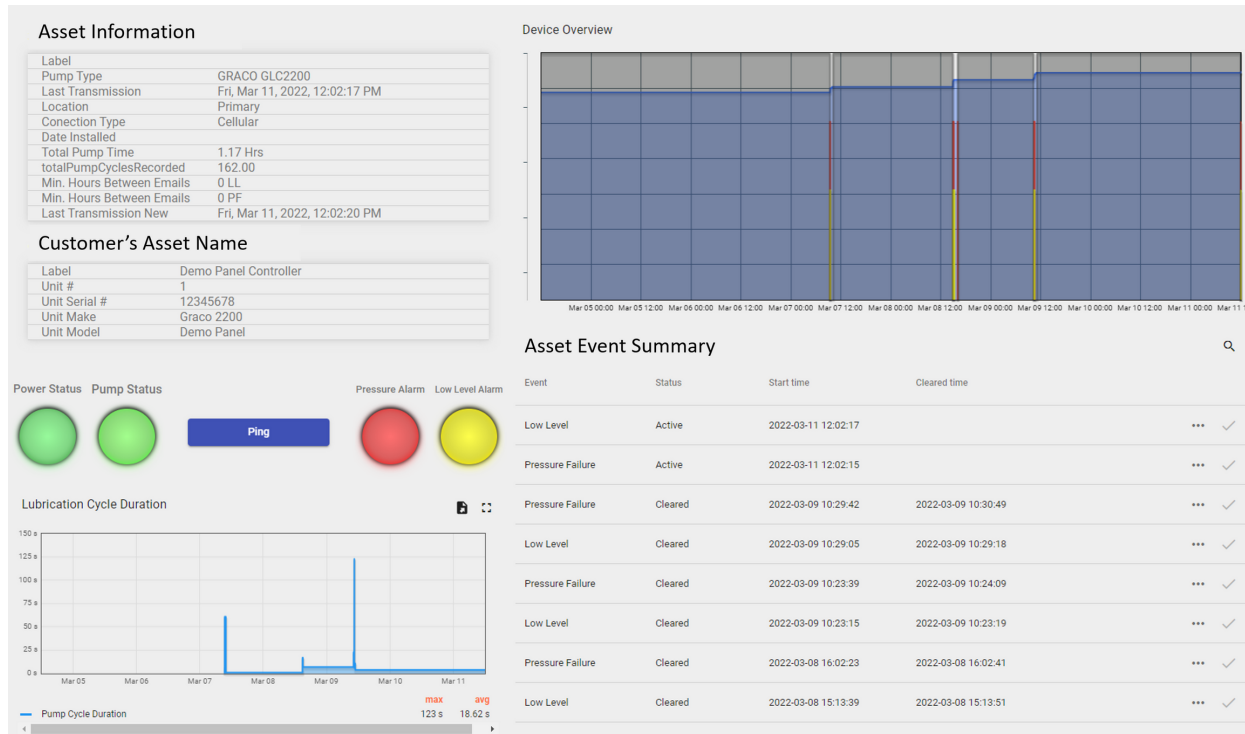
- Power Input (12 – 24 VDC only – no AC)
- Enclosure Rating – IP 65
- Box Size 4.6" x 3.5" x 1.5" deep
- Antenna included with unit
- Amphenol connector - 12 pin
- 6-foot color coded wire harness available
- AC to DC power conversion enclosure available



**Communicates
via WiFi or
Cellular Data**

INTERACTIVE LIVE WEBSITE DASHBOARD

Instant Access Asset Status (Power, Pump status, Faults & Lube Cycles)



Monitor Multiple Sites & Multiple Assets per Site

